
VERTICAL CASCADE GARDEN TECHNICAL DOCUMENTS

- TROUGH AND POT DETAIL
- 01_VERTICAL CASCADE GARDEN SPECIFICATION – STAND ALONE WALL
- 02_VERTICAL CASCADE GARDEN SPECIFICATION – WINDOW WALL
- 03_VERTICAL CASCADE GARDEN SPECIFICATION – DOORS
- 04_VERTICAL CASCADE GARDEN SPECIFICATION – NICHE
- 05_VERTICAL CASCADE GARDEN SPECIFICATION – LIGHTS, INTERNAL CORNER
- 06_VERTICAL CASCADE GARDEN SPECIFICATION – LIGHTS, EXTERNAL CORNER
- 07_VERTICAL CASCADE GARDEN SPECIFICATION – IRRIGATION
- 08_VERTICAL CASCADE GARDEN SPECIFICATION – EXTERIOR WITH FACADE INSULATION
- 09_VERTICAL CASCADE GARDEN SPECIFICATION – EXTERIOR WITHOUT FACADE INSULATION

INSTALLATION INSTRUCTIONS:

VERTICAL CASCADE GARDEN SHOULD BE INSTALLED ONTO 18MM OSB BOARDS.

OSB BOARDS SHOULD BE ATTACHED TO THE SUBSTRATE WALL DIRECTLY OR USING A UA ALU PROFILE (BEARING LOAD OF AT LEAST 60KG/M2).

TROUGHS ARE ATTACHED ONTO THE OSB BOARDS USING TX20 SCREWS 500MM APART AND 100MM FROM THE EDGE.

VISIBLE SIDE AND BOTTOM EDGE DETAIL IS MADE FROM 18MM MDF / SDK 15MM (INTERNAL ONLY).

LIGHTING SPECIFICATION:

LIGHT INTENSITY MIN.600 lx

LIGHT TEMPERATURE (COLOUR) MIN. 4000 K

IRRIGATION:

OPTION 1 - AUTOMATIC IRRIGATION WITH DRAIN CONNECTION

- AUTOMATIC WATER IRRIGATION SYSTEM CONNECTED TO THE MAIN WATER SUPPLY
- DRAIN CONNECTION THROUGH AN OVERFLOW PIPE IN THE BOTTOM TROUGH

OPTION 2 - AUTOMATIC IRRIGATION WITHOUT DRAIN CONNECTION

- WATER RESERVOIR IS FILLED EITHER MANUALLY OR AUTOMATICALLY THROUGH AN IRRIGATION SYSTEM CONNECTED TO THE MAIN WATER SUPPLY (APPROX.12,5L WATER / 14 DAYS / 1M2 TROUGH)
- WATER DISTRIBUTION THROUGH A PUMP MECHANISM

OPTION 3 - MANUAL IRRIGATION WITH NO WATER CONNECTION

- MANUAL IRRIGATION INTO THE TOP VERTICAL CASCADE GARDEN TROUGH (APPROX. 2,5L WATER / 1LM TROUGH)
- WATER - CATCHMENT TANK - PLACED UNDERNEATH THE WALL DURING IRRIGATION CYCLE ONLY

VERTICAL CASCADE GARDEN SUBSTRATE PREPARATION (DEKMETAL SYSTEM):

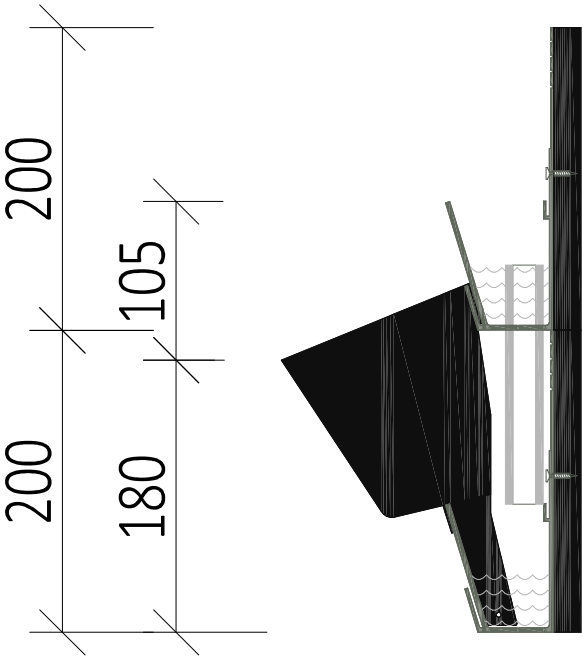
- L GRID SUPPORT ACCORDING TO STATIC EVALUATION (INCLUDING PLASTIC BACKPLATES TO MINIMISE THERMAL BRIDGES)
- HORIZONTAL J50 PROFILE ACCORDING TO STATIC EVALUATION (MAX. 400 MM)
- SCREW GT5 – 5,5 X +19MM FOR FIXING THE SUPPORT FRAME
- SCREW TX 3,5 X 2,5MM FOR FIXING THE TROUGH ONTO THE FRAME GRID
- VERTICAL GARDEN SIDE COVER FROM PLASTICISED SHEET METAL
- VERTICAL GARDEN BOTTOM EDGE WITH NO COVER
- VERTICAL GARDEN TOP EDGE WITH NO COVER

VERTICAL CASCADE GARDEN SUBSTRATE PREPARATION:

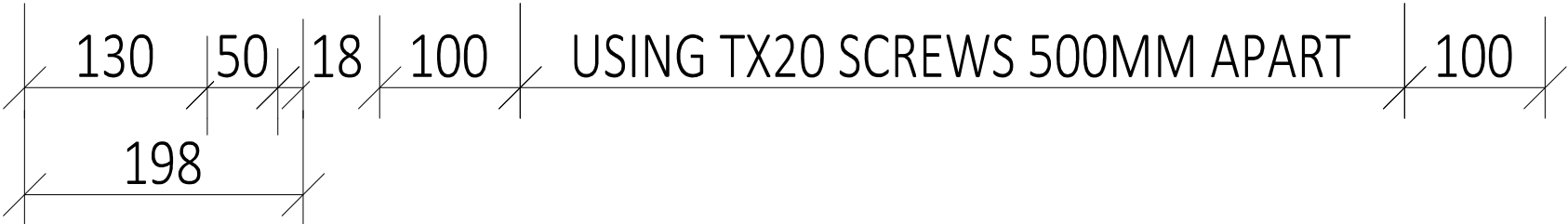
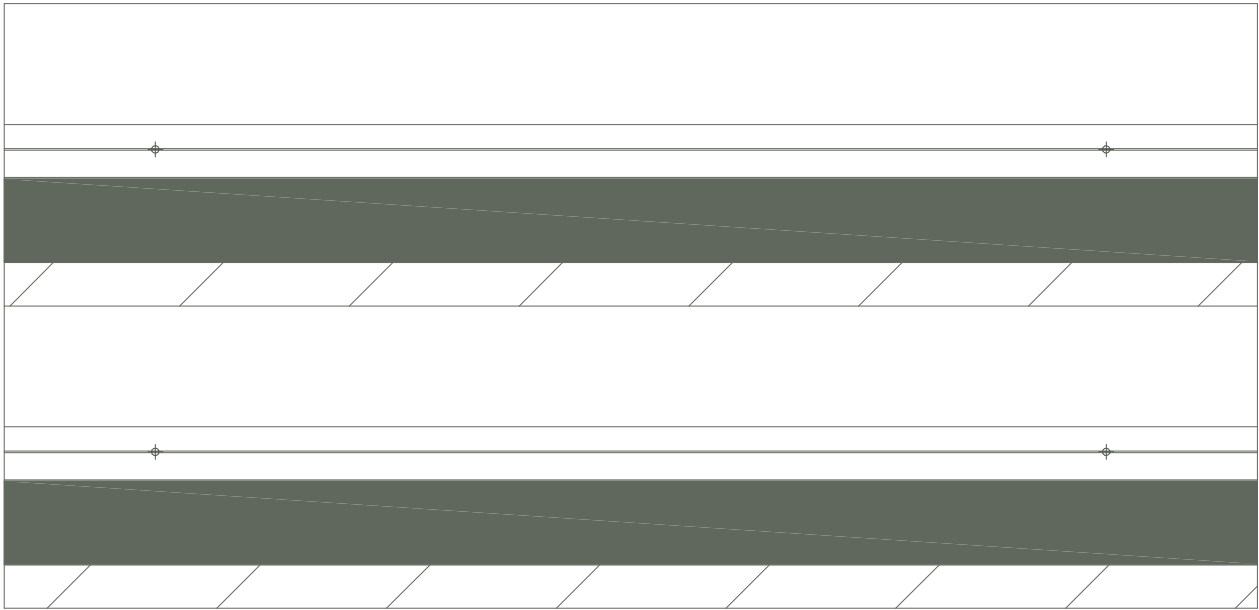
- L GRID SUPPORT ACCORDING TO STATIC EVALUATION (UNDULATIONS TO BE FILLED USING PLASTIC BACKPLATES)
- SCREW TX 3,5 X 2,5MM FOR FIXING THE TROUGH ONTO THE FRAME GRID
- VERTICAL GARDEN SIDE COVER FROM PLASTICISED SHEET METAL
- VERTICAL GARDEN BOTTOM EDGE WITH NO COVER
- VERTICAL GARDEN TOP EDGE WITH NO COVER

TROUGH AND POT DETAIL

SECTION VIEW



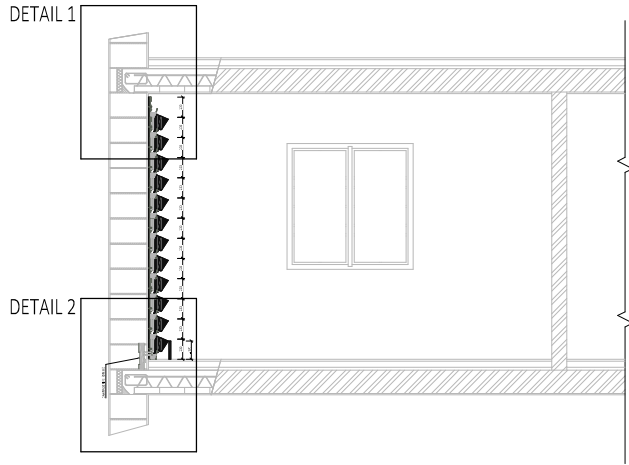
FRONT ELEVATION



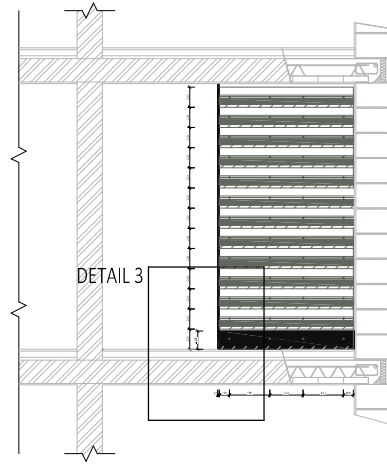
VERTICAL CASCADE GARDEN SHOULD BE INSTALLED ONTO 18MM OSB BOARDS.
OSB BOARDS SHOULD BE ATTACHED TO THE SUBSTRATE WALL DIRECTLY OR USING A UA ALU PROFILE (BEARING LOAD OF AT LEAST 60KG/M2).
TROUGHs ARE ATTACHED ONTO THE OSB BOARDS USING TX20 SCREWS 500MM APART AND 100MM FROM THE EDGE.
VISIBLE SIDE AND BOTTOM EDGE DETAIL IS MADE FROM 18MM MDF / SDK 15MM (INTERNAL ONLY).

01_VERTICAL CASCADE GARDEN SPECIFICATION – STAND ALONE WALL

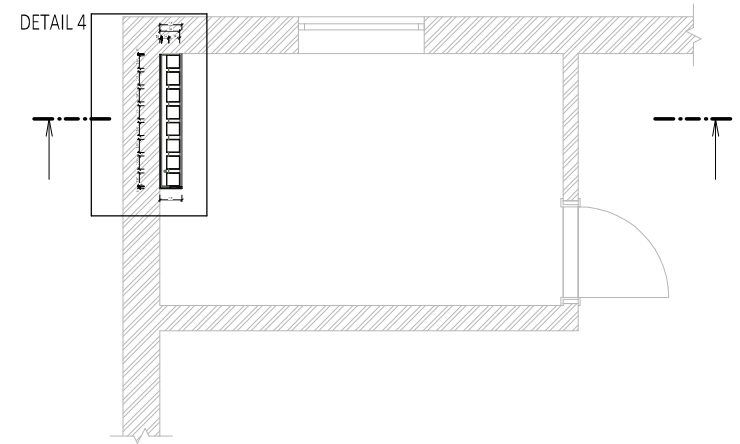
SECTION VIEW



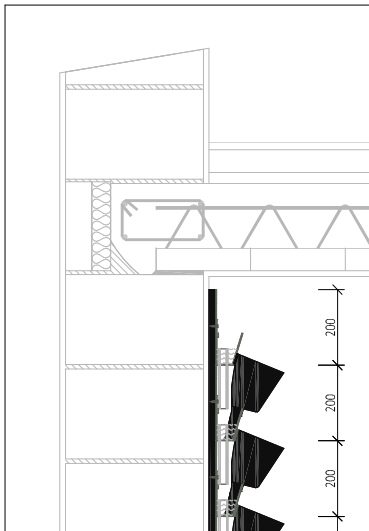
FRONT ELEVATION



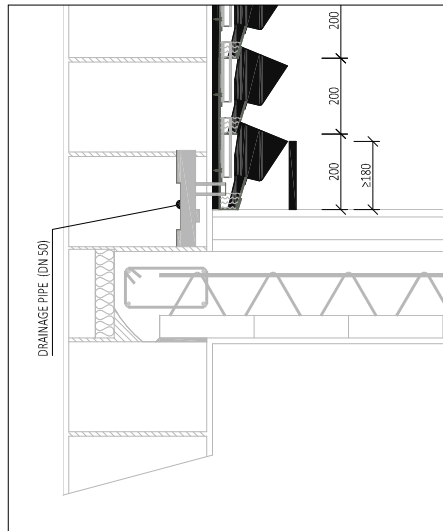
PLAN VIEW



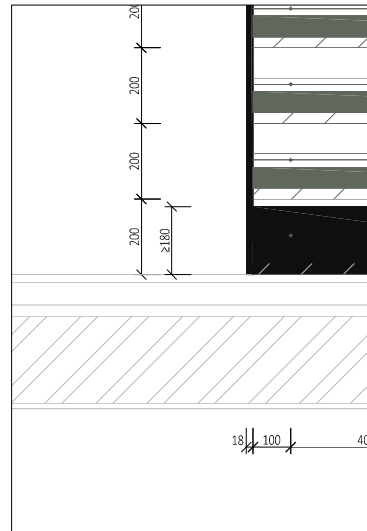
DETAIL 1



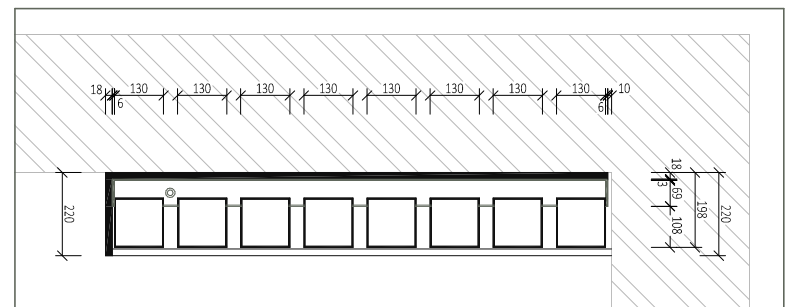
DETAIL 2



DETAIL 3



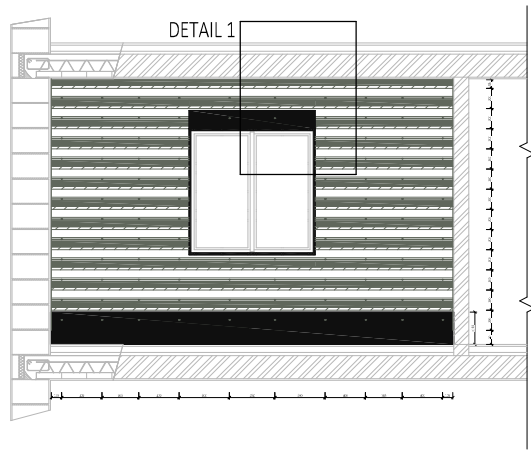
DETAIL 4



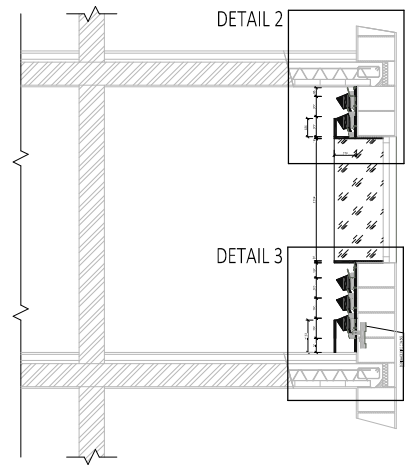
VERTICAL CASCADE GARDEN SHOULD BE INSTALLED ONTO 18MM OSB BOARDS.
OSB BOARDS SHOULD BE ATTACHED TO THE SUBSTRATE WALL DIRECTLY OR USING A UA ALU PROFILE (BEARING LOAD OF AT LEAST 60KG/M2).
TROUGHS ARE ATTACHED ONTO THE OSB BOARDS USING TX20 SCREWS 500MM APART AND 100MM FROM THE EDGE.
VISIBLE SIDE AND BOTTOM EDGE DETAIL IS MADE FROM 18MM MDF / SDK 15MM (INTERNAL ONLY).

02_VERTICAL CASCADE GARDEN SPECIFICATION – WINDOW WALL

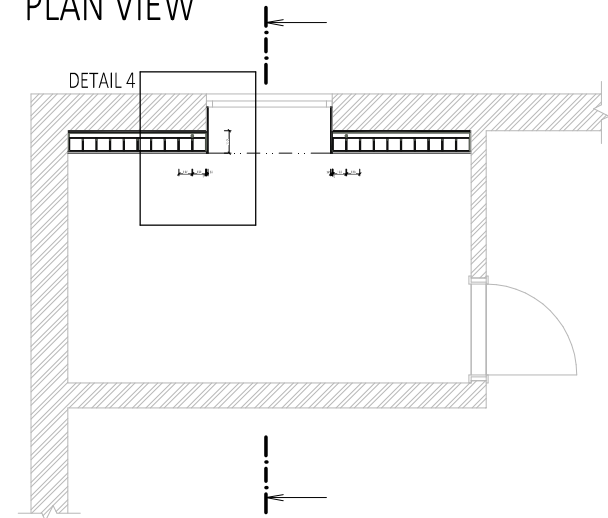
FRONT ELEVATION



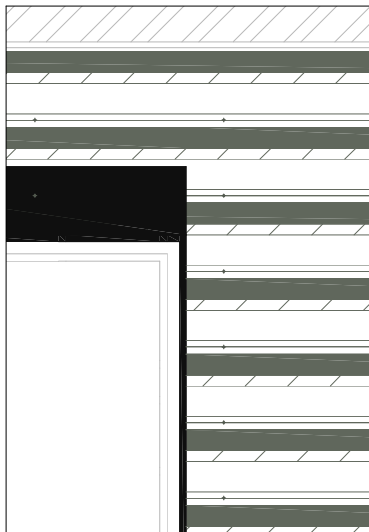
SECTION VIEW



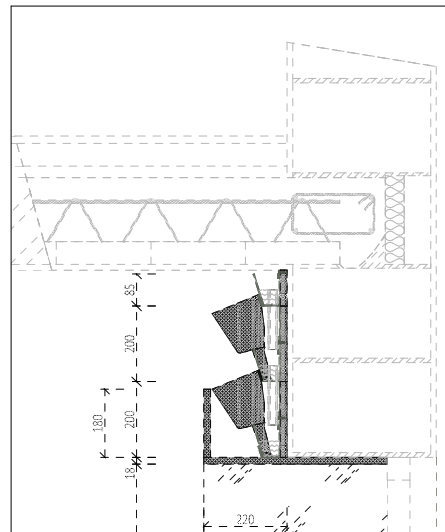
PLAN VIEW



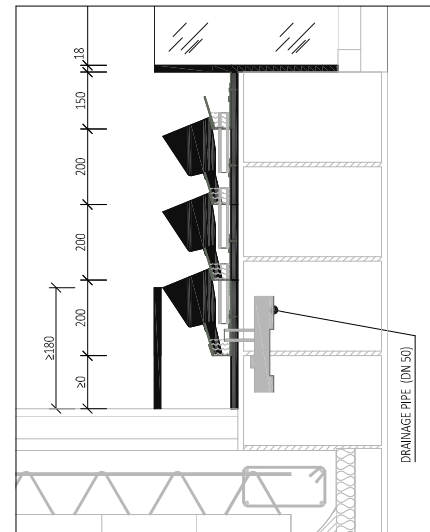
DETAIL 1



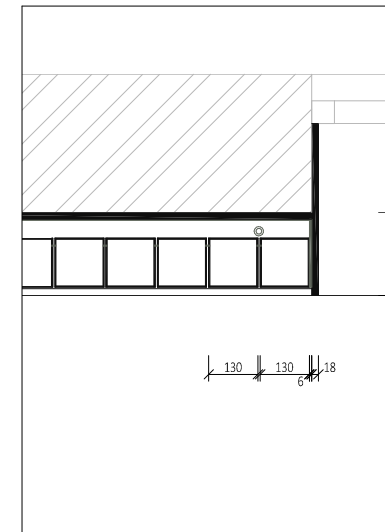
DETAIL 2



DETAIL 3



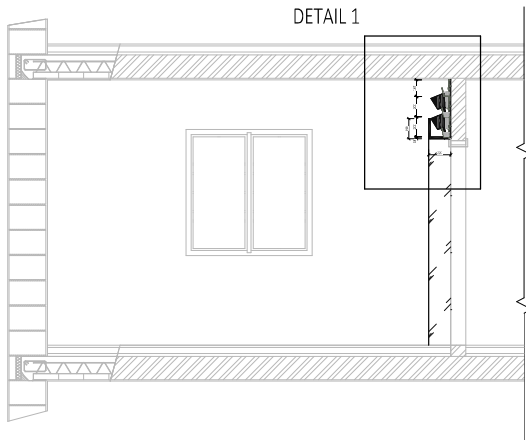
DETAIL 4



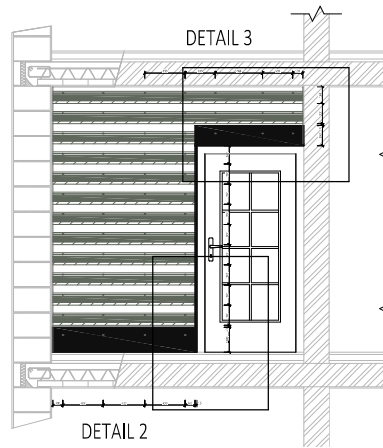
VERTICAL CASCADE GARDEN SHOULD BE INSTALLED ONTO 18MM OSB BOARDS.
OSB BOARDS SHOULD BE ATTACHED TO THE SUBSTRATE WALL DIRECTLY OR USING A UA ALU PROFILE (BEARING LOAD OF AT LEAST 60KG/M2).
TROUGH ARE ATTACHED ONTO THE OSB BOARDS USING TX20 SCREWS 500MM APART AND 100MM FROM THE EDGE.
VISIBLE SIDE AND BOTTOM EDGE DETAIL IS MADE FROM 18MM MDF / SDK 15MM (INTERNAL ONLY).

03_VERTICAL CASCADE GARDEN SPECIFICATION – DOORS

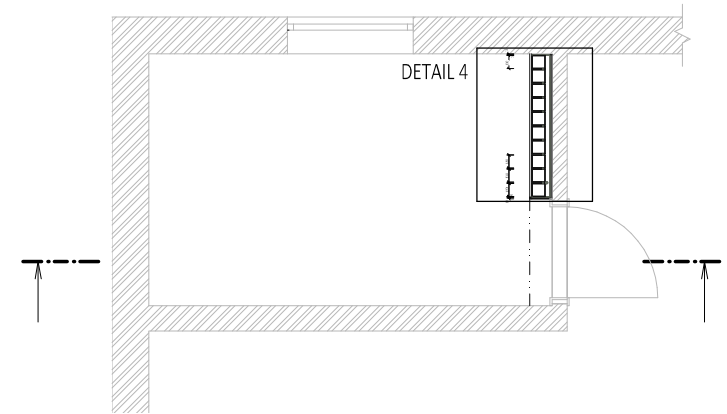
SECTION VIEW



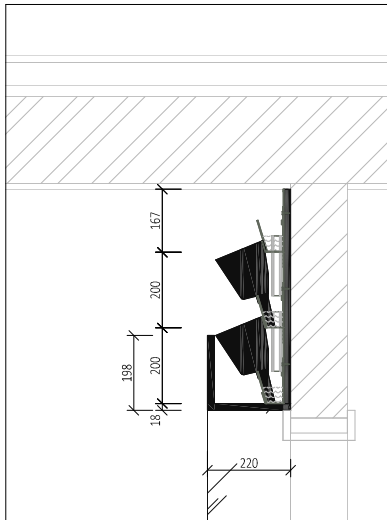
FRONT ELEVATION



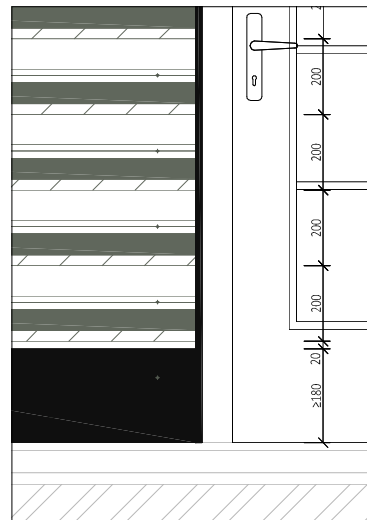
PLAN VIEW



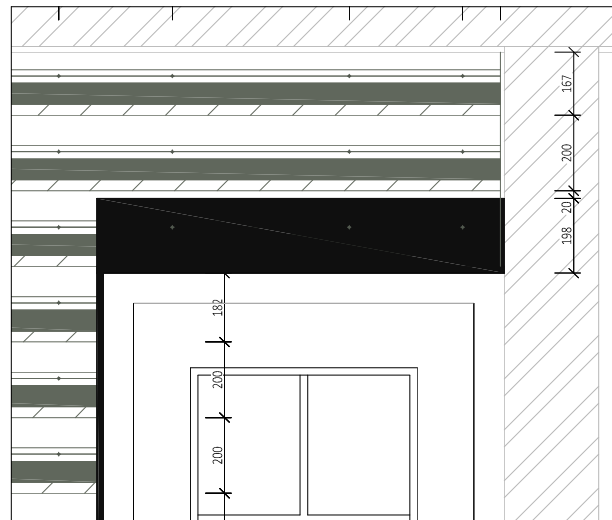
DETAIL 1



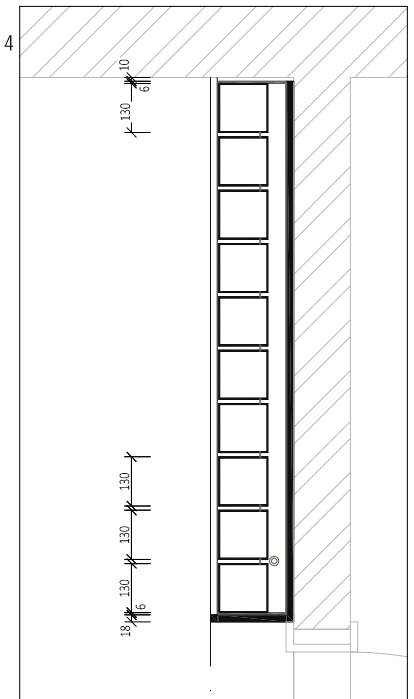
DETAIL 2



DETAIL 3



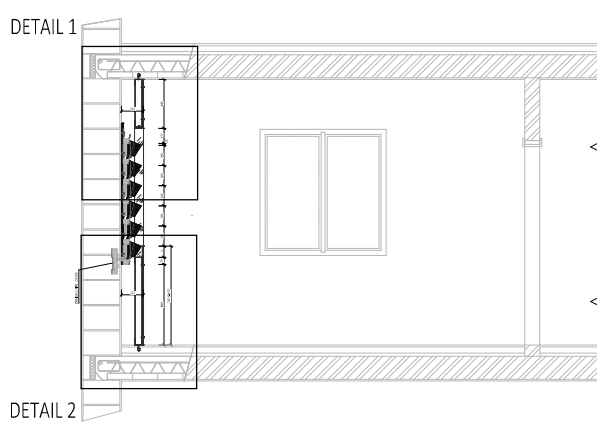
DETAIL 4



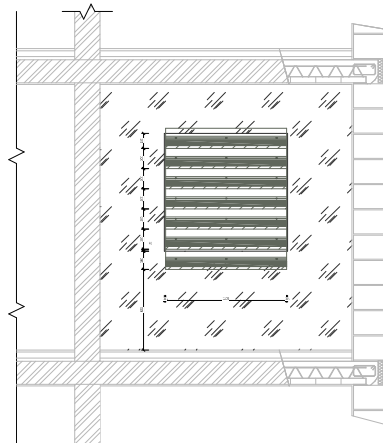
VERTICAL CASCADE GARDEN SHOULD BE INSTALLED ONTO 18MM OSB BOARDS.
OSB BOARDS SHOULD BE ATTACHED TO THE SUBSTRATE WALL DIRECTLY OR USING A UA ALU PROFILE (BEARING LOAD OF AT LEAST 60KG/M2).
TROUGH ARE ATTACHED ONTO THE OSB BOARDS USING TX20 SCREWS 500MM APART AND 100MM FROM THE EDGE.
VISIBLE SIDE AND BOTTOM EDGE DETAIL IS MADE FROM 18MM MDF / SDK 15MM (INTERNAL ONLY).

04_VERTICAL CASCADE GARDEN SPECIFICATION – NICHE

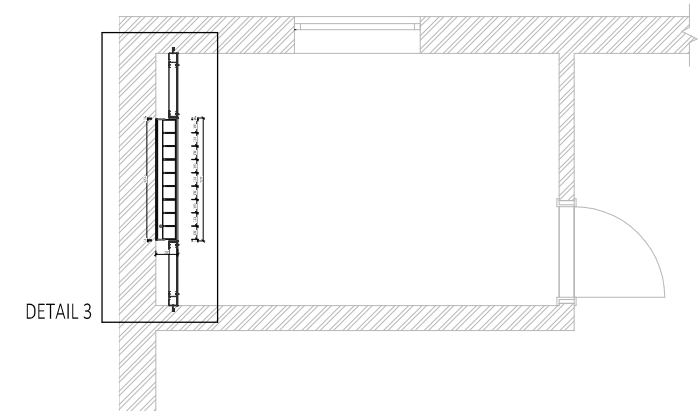
SECTION VIEW



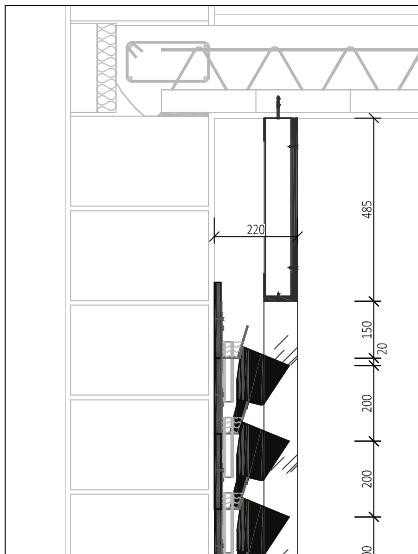
FRONT ELEVATION



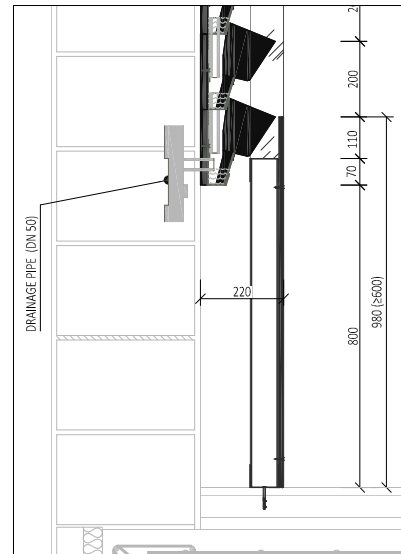
PLAN VIEW



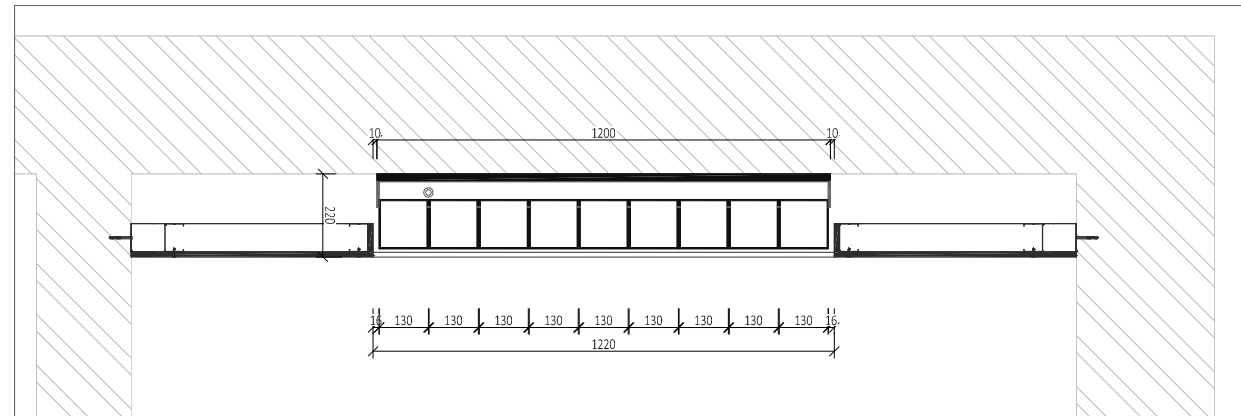
DETAIL 1



DETAIL 2

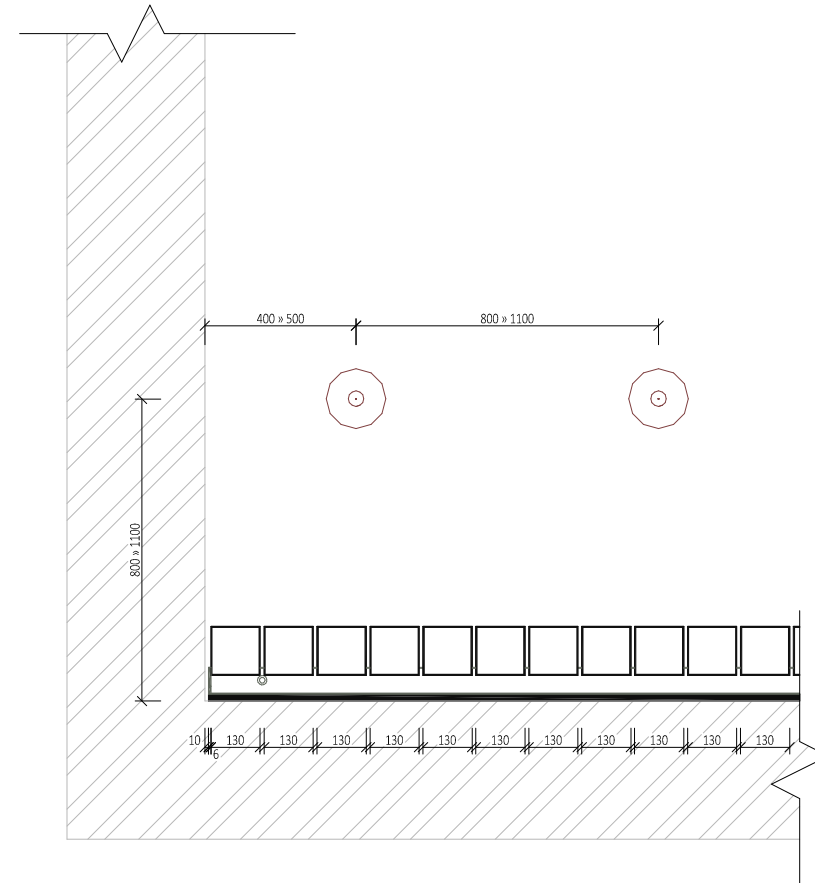
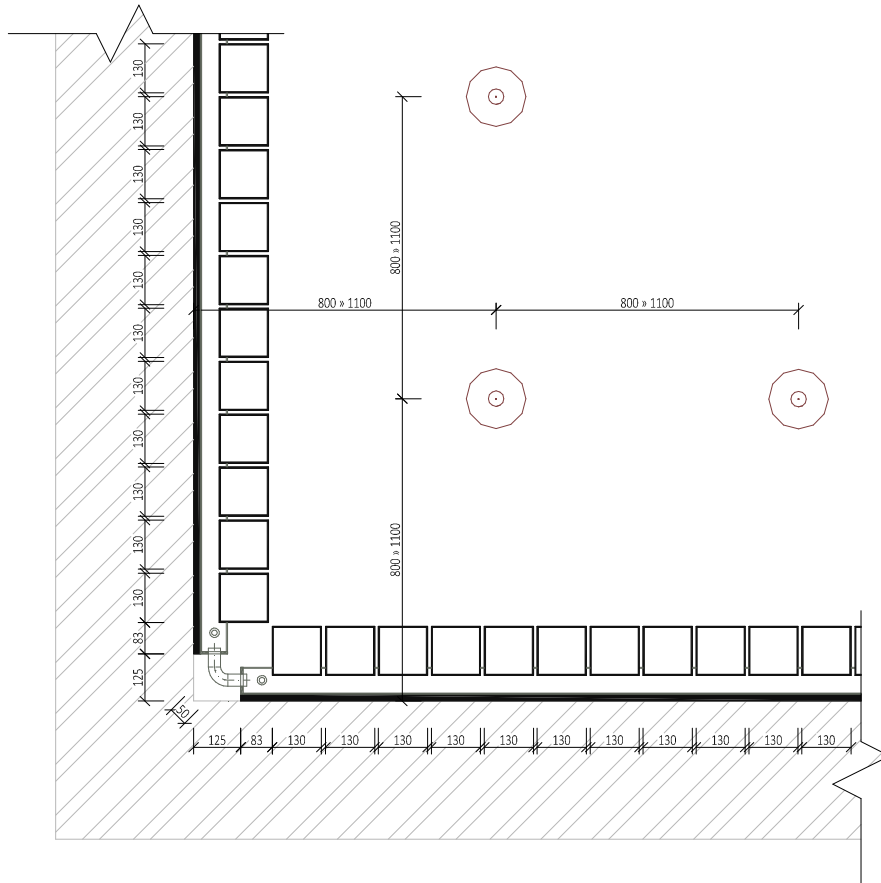


DETAIL 3



VERTICAL CASCADE GARDEN SHOULD BE INSTALLED ONTO 18MM OSB BOARDS.
OSB BOARDS SHOULD BE ATTACHED TO THE SUBSTRATE WALL DIRECTLY OR USING A UA ALU PROFILE (BEARING LOAD OF AT LEAST 60KG/M2).
TROUGH ARE ATTACHED ONTO THE OSB BOARDS USING TX20 SCREWS 500MM APART AND 100MM FROM THE EDGE.
VISIBLE SIDE AND BOTTOM EDGE DETAIL IS MADE FROM 18MM MDF / SDK 15MM (INTERNAL ONLY).

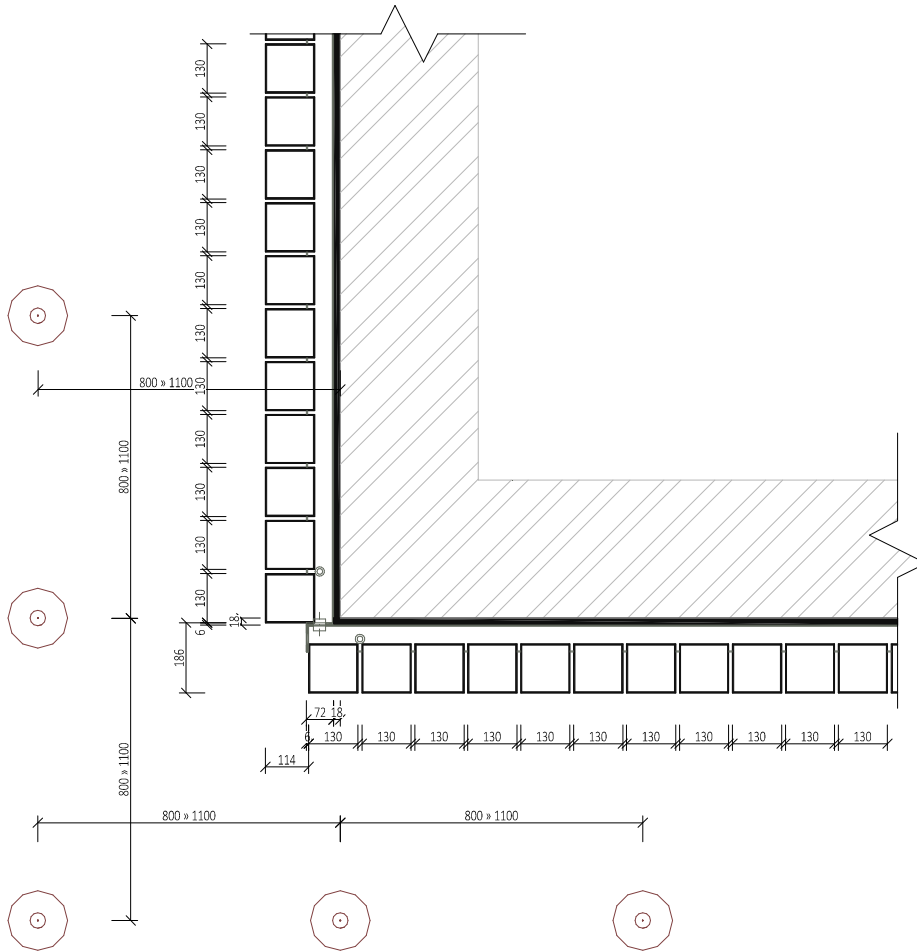
05_VERTICAL CASCADE GARDEN SPECIFICATION – LIGHTS, INTERNAL CORNER



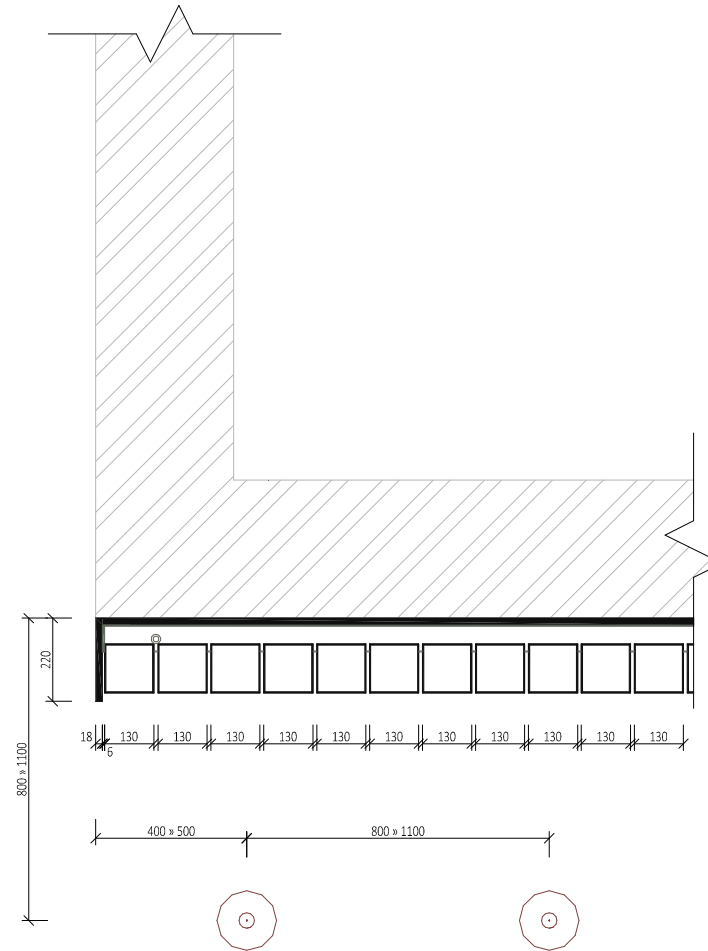
VERTICAL CASCADE GARDEN SHOULD BE INSTALLED ONTO 18MM OSB BOARDS.
 OSB BOARDS SHOULD BE ATTACHED TO THE SUBSTRATE WALL DIRECTLY OR USING A UA ALU PROFILE (BEARING LOAD OF AT LEAST 60KG/M2).
 TROUGHS ARE ATTACHED ONTO THE OSB BOARDS USING TX20 SCREWS 500MM APART AND 100MM FROM THE EDGE.
 VISIBLE SIDE AND BOTTOM EDGE DETAIL IS MADE FROM 18MM MDF / SDK 15MM (INTERNAL ONLY).

LIGHTING SPECIFICATION:
 LIGHT INTENSITY MIN.600 lx
 LIGHT TEMPERATURE (COLOUR) MIN. 4000 K

06_VERTICAL CASCADE GARDEN SPECIFICATION – LIGHTS, EXTERNAL CORNER



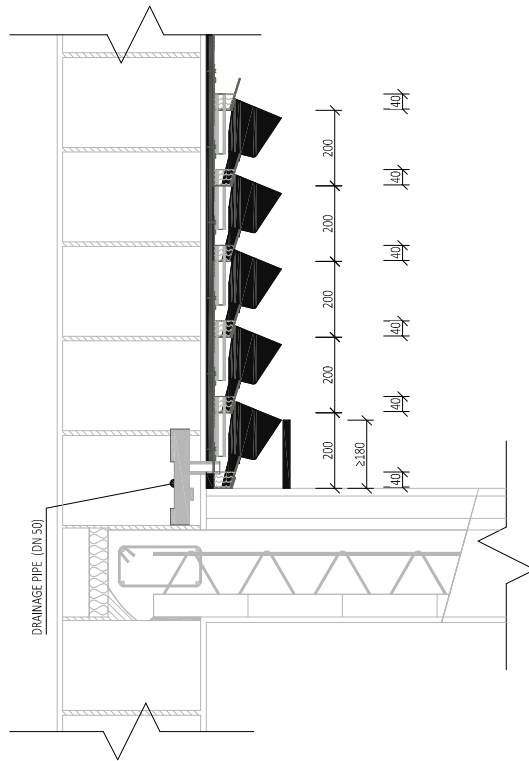
VERTICAL CASCADE GARDEN SHOULD BE INSTALLED ONTO 18MM OSB BOARDS.
OSB BOARDS SHOULD BE ATTACHED TO THE SUBSTRATE WALL DIRECTLY OR USING A UA ALU PROFILE (BEARING LOAD OF AT LEAST 60KG/M2).
TROUGH ARE ATTACHED ONTO THE OSB BOARDS USING TX20 SCREWS 500MM APART AND 100MM FROM THE EDGE.
VISIBLE SIDE AND BOTTOM EDGE DETAIL IS MADE FROM 18MM MDF / SDK 15MM (INTERNAL ONLY).



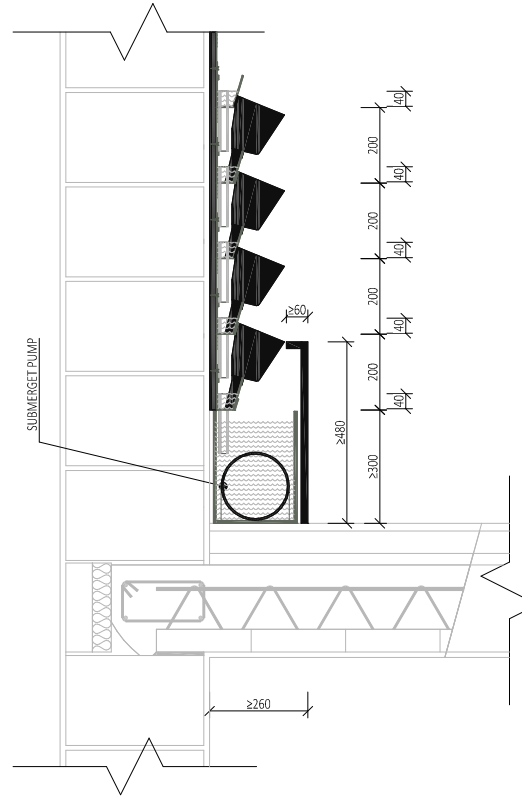
LIGHTING SPECIFICATION:
LIGHT INTENSITY MIN.600 lx
LIGHT TEMPERATURE (COLOUR) MIN. 4000 K

07_VERTICAL CASCADE GARDEN SPECIFICATION – IRRIGATION

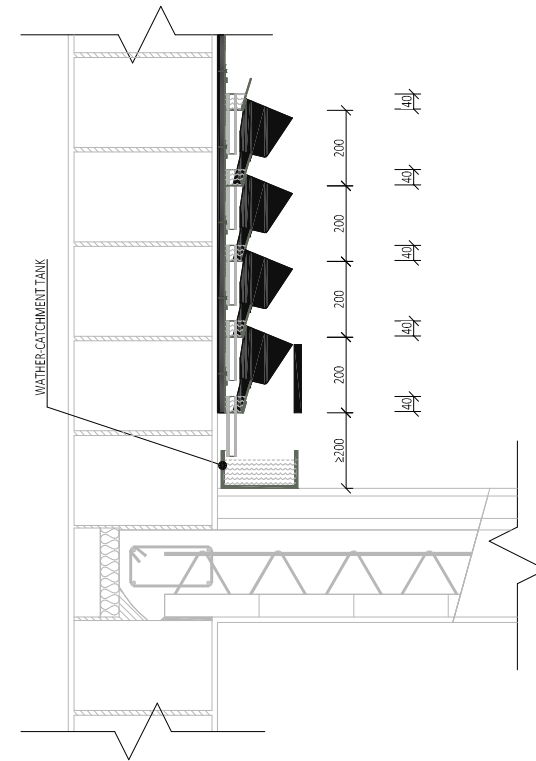
01_DRAIN CONNECTION



02_WATER RESERVOIR WITH PUMP



03_MANUAL IRRIGATION



VERTICAL CASCADE GARDEN SHOULD BE INSTALLED ONTO 18MM OSB BOARDS. OSB BOARDS SHOULD BE ATTACHED TO THE SUBSTRATE WALL DIRECTLY OR USING A UA ALU PROFILE (BEARING LOAD OF AT LEAST 60KG/M2). TROUGHS ARE ATTACHED ONTO THE OSB BOARDS USING TX20 SCREWS 500MM APART AND 100MM FROM THE EDGE. VISIBLE SIDE AND BOTTOM EDGE DETAIL IS MADE FROM 18MM MDF / SDK 15MM (INTERNAL ONLY).

OPTION 1 - AUTOMATIC IRRIGATION WITH DRAIN CONNECTION

- AUTOMATIC WATER IRRIGATION SYSTEM CONNECT TO THE MAIN WATER SUPPLY
- DRAIN CONNECTION THROUGH AN OVERFLOW PIPE IN THE BOTTOM TROUGH

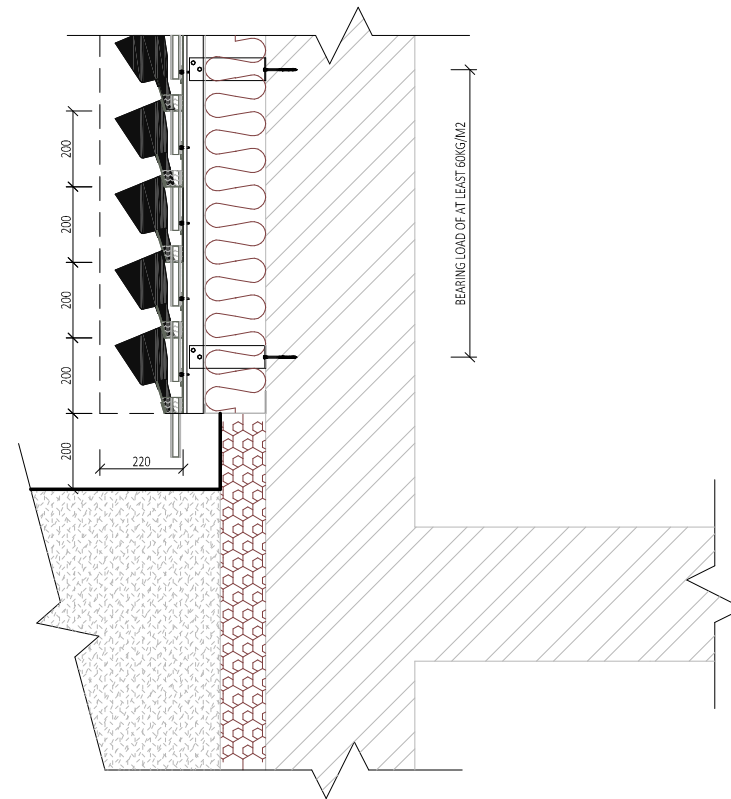
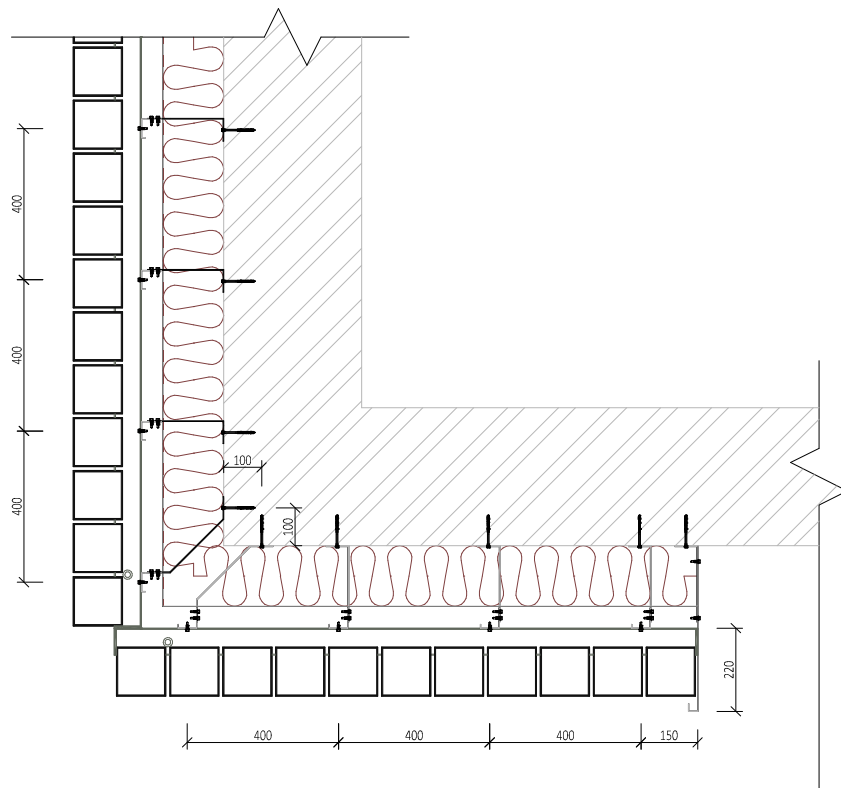
OPTION 2 - AUTOMATIC IRRIGATION WITHOUT DRAIN CONNECTION

- WATER RESERVOIR IS FILLED EITHER MANUALLY OR AUTOMATICALLY THROUGH AN IRRIGATION SYSTEM CONNECTED TO THE MAIN WATER SUPPLY (APPROX. 12,5L WATER / 14 DAY / 1M2 TROUGH)
- WATER DISTRIBUTION THROUGH A PUMP MECHANISM

OPTION 3 - MANUAL IRRIGATION WITH NO WATER CONNECTION

- MANUAL IRRIGATION INTO THE TOP VERTICAL CASCADE GARDEN TROUGH (APPROX. 2,5L WATER / 1LM TROUGH)
- WATER - CATCHMENT TANK - PLACED UNDERNEATH THE WALL DURING IRRIGATION CYCLE ONLY

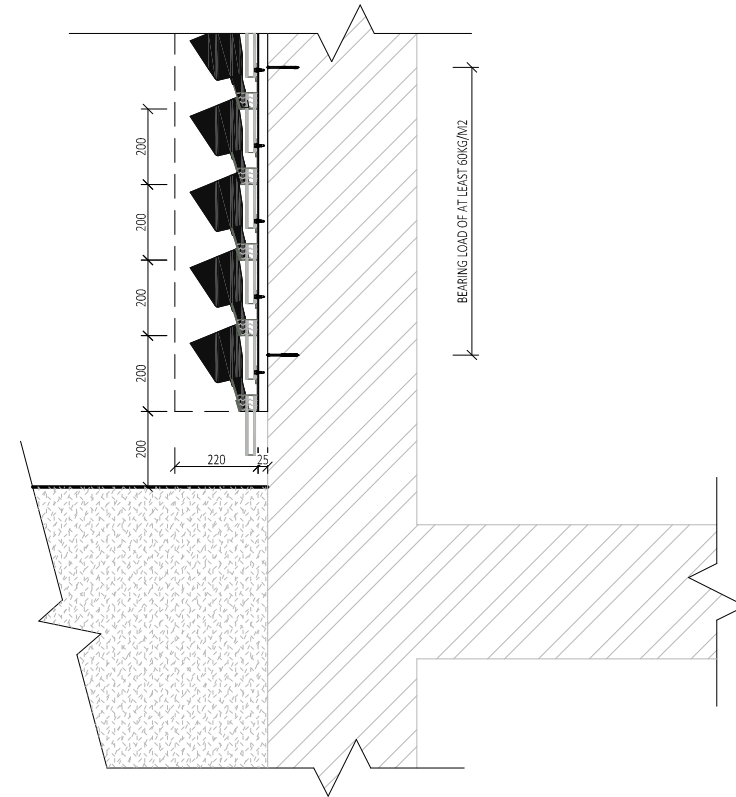
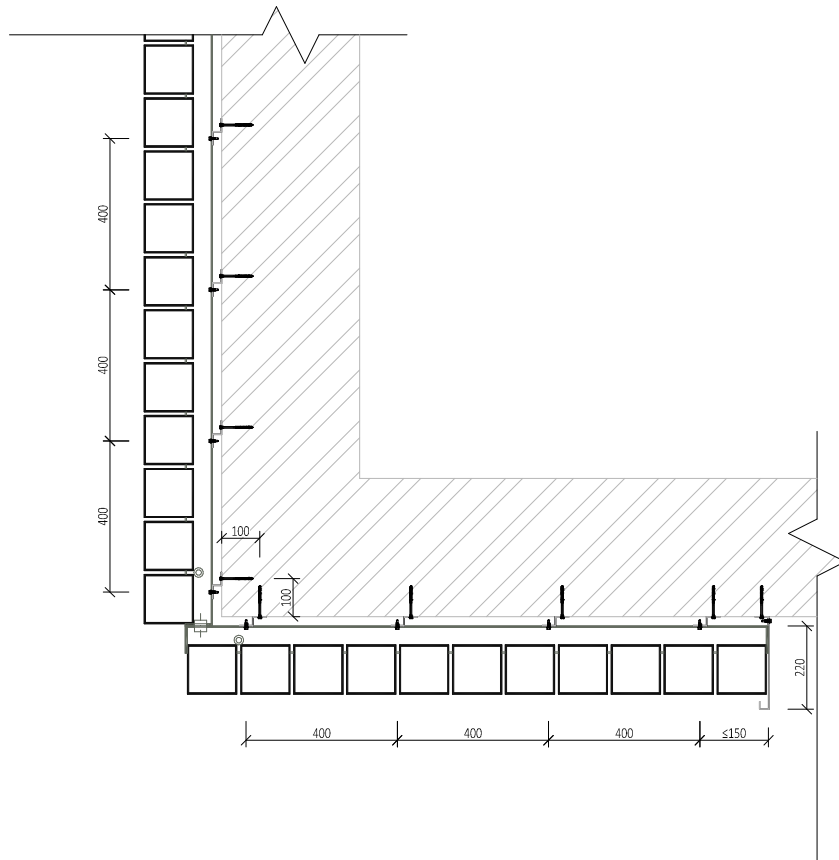
08_VERTICAL CASCADE GARDEN SPECIFICATION – EXTERIOR WITH FACADE INSULATION



VERTICAL CASCADE GARDEN SUBSTRATE PREPARATION (DEKMETAL SYSTEM):

- L GRID SUPPORT ACCORDING TO STATIC EVALUATION (INCLUDING PLASTIC BACKPLATES TO MINIMISE THERMAL BRIDGES)
- HORIZONTAL J50 PROFILE ACCORDING TO STATIC EVALUATION (MAX. 400 MM)
- SCREW GT5 – 5,5 X +19MM FOR FIXING THE SUPPORT FRAME
- SCREW TX 3,5 X 2,5MM FOR FIXING THE TROUGH ONTO THE FRAME GRID
- VERTICAL GARDEN SIDE COVER FROM PLASTICISED SHEET METAL
- VERTICAL GARDEN BOTTOM EDGE WITH NO COVER
- VERTICAL GARDEN TOP EDGE WITH NO COVER

09_VERTICAL CASCADE GARDEN SPECIFICATION – EXTERIOR WITHOUT FACADE INSULATION



VERTICAL CASCADE GARDEN SUBSTRATE PREPARATION:

- L GRID SUPPORT ACCORDING TO STATIC EVALUATION (UNDULATIONS TO BE FILLED USING PLASTIC BACKPLATES)
- SCREW TX 3,5 X 2,5MM FOR FIXING THE TROUGH ONTO THE FRAME GRID
- VERTICAL GARDEN SIDE COVER FROM PLASTICISED SHEET METAL
- VERTICAL GARDEN BOTTOM EDGE WITH NO COVER
- VERTICAL GARDEN TOP EDGE WITH NO COVER